



UDC 632.4: 635.9

## PARASITISM OF *MICROMYCETE SCLEROTINIA SCLEROTIORUM* (LIB.) DE BARY ON THE DAHLIA PLANTS (*DAHLIA* CAV.) UNDER DIFFERENT WEATHER CONDITIONS

**M. Y. PIKOVSKYI**, *PhD of Biology Sciences, docent of the department of phytopathology*  
<https://orcid.org/0000-0003-0689-604X>

E-mail: mprmir@ukr.net

**O. V. KOLESNICHENKO**, *Doctor of Biological Sciences, Professor of Department of Decorative Gardening and Phytodesign*

<https://orcid.org/0000-0003-4767-6844>

E-mail: okolesnichenko67@gmail.com

**V. I. MELNYK**, *PhD of Agricultural Sciences, Associate Professor*

<https://orcid.org/0000-0002-8782-1236>

E-mail: vik4865@ukr.net

**O. O. SEREDIUK**, *PhD of Agricultural Sciences*

**National University of Life and Environmental Sciences of Ukraine**

<https://doi.org/10.31548/bio2019.03.002>

The white mold of dahlia is a dangerous disease that remains unexplored in Ukraine. In order to study the symptoms of the disease and the impact of meteorological conditions on its development, a study was conducted in 2015–2017 in Kyiv. In studying the diagnostic signs of the disease, a visual examination, and a biological method of diagnosis were used. The development of the disease was estimated at a six-point scale. As a result of phytopathological monitoring, the stalk form of white mold was found. Substantial damage to plants resulted in tissue maceration and fragmentation of stems and peduncles. The development of the disease of the stem led to plant wilting. During the years of research, white mold on dahlia manifested itself in the autumnal period of plant growth during mass flowering. Meteorological conditions have significantly influenced its distribution and development. In particular, in 2015, *Sclerotinia* white mold of dahlia manifested itself from the first decade of September for a hydrothermal coefficient (HTC) of 1.0. In 2016, the disease appeared on plants in the first decade of October, when the HTC was 5.7. The first plants affected by white mold in 2017 were marked by the second decade of September for the HTC 1,2. It was that year when the disease has reached the maximum spread and development, which is due to the presence of precipitation from the second decade of September and until the end of October, as well as the absence of low temperatures during this period. Information about the dates of the appearance of the white mold on the dahlia deserves attention when planning a set of protective measures. In prospect in depth analysis of the influence of various meteorological factors on the development of white mold on dahlia should be used in drawing up models of the prediction of disease development in this culture.

*Keywords:* white mold, dahlia, symptoms, meteorological conditions, development of the disease

**Introduction.** Dahlia (*Dahlia Cav.*) is one of the most popular perennial herbaceous flowering plants, which is characterized by distinctive, attractive flowers of various shades and colors and is grown in many regions of the world (Verma J., Kulkarni S. B., 2017).

At the same time, as a result of the damage to plants by various pathogens (*Botrytis cinerea*, *Verticillium spp.*, *Entyloma calendulae f. dahliae*, *Phytophthora spp.*, some viruses), the duration of their flowering, decline or loss of decorative character, decrease of the stability of tubers against diseases during storage (Sharma K., Verma Sh., Gautam, H.R., Handa A., 2017). In different countries, powdery mildew occurs in dahlias (Dai, Y.-F. et al., 2018), viral diseases (Almeyda, C. V. et al., 2009). On dahlia plants *Choanephora cucurbitarum* micromisette parasites were found (Park, J. H. et al., 2016). At the same time, one of the most dangerous dwarf diseases is white mold caused by the micromycete *Sclerotinia sclerotiorum* (Lib.) de Bary (Horst R.K., 2008). However, in Ukraine, it has not been studied. Thus, there is no information on the symptoms of dahlia *Sclerotinia* white mold and the characteristics of the disease in different meteorological conditions. At the same time, *S. sclerotiorum* is a common pathogen in agrocenoses of open soil and in greenhouses on many cultures (Kyryk, M. M., Pikovskyi, M.Y., Azaiki, S., 2012; Willbur, J.F. et al., 2018).

**Analysis of the last researches and publication.** In scientific literature, the information on the parasitism of *S. sclerotiorum* on the dahlia is fragmentary. In particular, (Kerruish, R. M., 1997) indicates the development of a stem-like form of *Sclerotinia* white mold, which led to plant wilting. Horst R.K. (Horst R.K., 2008) also emphasizes the mold of the stalk of the dahlia. In the classical literary sources relating to the diseases of flowering plants, the white mold of dahlia is undetectable.

**The aim of research.** Purpose of the investigation is the study of dahlia white mold symptoms and the disease development peculiarities depending on the weathers conditions.

**Materials and methods of the exploration.** The studies of the *S. sclerotiorum* development peculiarities on the dahlia perennial plants were carried out during the route inspections in the vegetation period of 2015-2017 at the Kyiv Territorial Centre of the National University of Life and Environmental Sciences (NULES) of Ukraine on the natural infections background. The specification of the disease symptoms and pathogen morphological study were conducted in the Experimental Laboratory «Mycology and Phytopathology» with the use of the accept methods (Böttcher, I. et al., 1987).

Stationary plots were selected in the dahlia plantings. Estimates were carried out on the plants there every decade. The disease spread was expressed by the formula:

$$P = \frac{n \times 100}{N},$$

Where  $P$  – is appearance frequency, %;  
 $n$  – samples amount in which these species were detected;

$N$  – total number of the researched;

The affection intensity was determined utilizing the scale which we had developed: 0 – the disease symptoms were absent; 0,1 – the affectioned part on the stem was up to 10 mm long. The diseased tissue resembled wet or dry decolourized tissue; 1 – the space of the stem affectioned part was 10-20 mm; it was covered with white cotton wool-like mycelium, that under the dry conditions was expressed weakly and the diseased tissue was decolourized;  $\frac{1}{2}$  of the stem circumference was enveloped with disease; 2 – the affectioned part of the stem was 20-40 mm long; under the humid conditions the place of the affection was covered with white cotton wool-like mycelium on which the pathogene sclerotia were formed; in the dry weather the disease places were decolourized, sclerotia single since when getting dry they fell on the soil surface; the entire circumference was envylopped with the affectioned tissue; the disease symptoms were also

on the lateral shoots; 3 – the length of the stem affected part was 30-50 %, the affected tissue was covered by white mycelium and sclerotia or can be decolourized with the weakly developed mycelium; the disease causative agent sclerotia appear in the middle of the stems; separate lateral shoots dried, were cracked; the part above the affection place began to wither; 4 – the stem was affected almost in full; the disease symptoms were observed as well on the lateral shoots, among them floriferous ones; the affected tissue of the stem and shoots got soaked, that caused their cracking and the plant perished.

The white mold development was determined applying the formula:

$$Rx = \frac{\sum(a \times b) \times 100}{N \times K},$$

where  $R_x$  – the disease development, %;

$\sum(a \times b) \times 100$  – is product of the diseased plants amount for the corresponding point of affection;

$N$  – is total number of the estimated plants (healthy and diseased);

$K$  – is the highest point of the estimation scale.

The hydrothermal coefficient (HTC) by the methods of G.T. Selyaninov was determined using the formula:

$$HTC = \Sigma x / \Sigma t \times 10,$$

where  $\Sigma x$  and  $\Sigma t$  – accordingly sum of precipitations and temperatures in the period, when the temperature has not been lower than 10 °C.

**Results of the researches and their discussion.** The stem form of the storage rot display was noted in cases of the dahlia plants affection by the fungus *S. sclerotiorum*. This form can appear both at the basis (near the soil surface) and in any its part. At the beginning of the disease development wet, saturated, with moisture spots appeared on the stems. Their site increased and under the high air humidity those spots were covered with white cotton wool-like mycelium which

in some time thickened (fig. 1a) and transformed into black sclerotia (fig. 1b). When affected tissues got dry they fell on the soil surface. Sclerotia could also be detected in the middle of the infected stems and floriferous shoots (fig. 1c).

Under the disease intensive development, the affected part of the stem achieved considerable size (the infection spread upwards and downwards from the affection place). In our investigations the storage root also displayed on the floriferous shoots and peduncles of leaves. The strong plants affection appeared to cause the tissues maceration that brought about the cracking (fig. 2a) of stems and floriferous shoots (fig. 2b). The disease displays in the stem radical part caused the plants withering. As a result, buds and flowers got dry (fig. 2c).

The decolorizing of the parts affected by *S. sclerotiorum* was noted as well. As a rule, this took place after the periods of the plants moistening and infection – the weather conditions became more droughty. At the same time the mycelium and sclerotia continued to form in the middle of the affected stems.

As some authors state the storage rot, spread is influenced by the weather factors and other conditions which cause the plants affection by the pathogene at certain their growth and development stages [9]. At the same time those problems concerning dahlia are not studied. That demands these aspects making sure as for this crop.

The analysis of the dahlia plants vegetation period weather conditions in the summer months of 2015 showed that in June the average daily temperature was 20,7; 20,6 and 18,7 °C respectively depending on a decade (fig. 3). The precipitations amount was 4,0 mm during the entire month. The plants affection monitoring by the storage rot defected the disease absence. During July the average daily temperature was 21,6 °C the beginning and middle of the month being characterized with the precipitations deficit

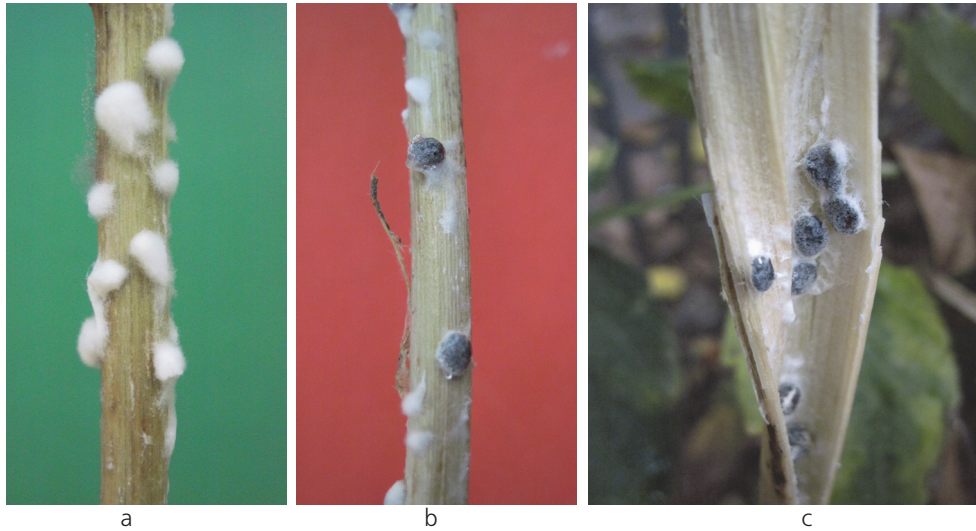


Fig. 1. Diagnostic symptoms of the dahlia stem affection by *S. sclerotiorum*: (a) the pathogen mycelium on the infected tissues surface; sclerotia on the affected part surface (b) and in the middle of the stem (c)



Fig. 2 Cracking of the dahlia stem (a) and floriferous shoot (b) affected by the white mold; flowers drying as a result of the disease stem form display (c)

and in the third decade their number was 33,2 mm. During the mentioned period the plants affection by *S. sclerotiorum* was not detected either. The weather conditions in August were characterized with average daily temperature 22,8; 21,4 and 20,3 °C respec-

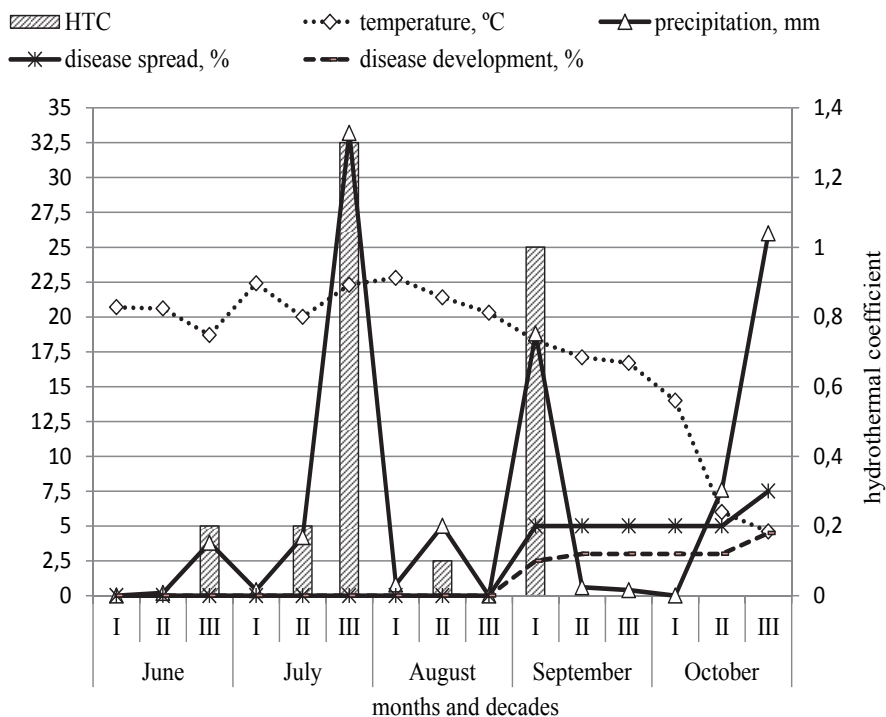
tively depending on the decades. The precipitations amount was insufficient (5,8 mm during the first and second decades). The analysis of the plants phytopathological state showed the storage rot absence. September was characterized with the gradual average

daily temperature lowering from 18,3 to 17,1 and 16,7 °C, during the first decade the precipitations number was 18,8 mm, HTC being 1,0. The first plants with the storage rot stem form symptoms were detected just in the first decade of September, the disease spread being 5,0 % and its development 2,5 %. Afterwards the affected plants amount did not increase in the first and second decades. The dahlia plants vegetation lasted in October. During this period the average daily temperature in the first, second and third decades was 14,0; 3,0 and 4,6 respectively, the precipitations number 33,6 mm, the disease spread being 5,0 %, its development 4,5 %.

When growing and developing of the dahlia plants in the June of 2016 the average daily temperature ranged from 16,7-24,6 °C the precipitations sum was 21,5 mm (fig. 4), in July 19,9; 23,6; 22,3 °C and 42 mm respec-

tively (depending on a decade), in August 20,2 °C and 26,8 mm. During the summer vegetation period the storage rot dahlia was not detected. In September the average daily temperature was 18,2; 15,3 and 10,9 °C (depending on a decade), the precipitations amount 6,8 mm. Under such conditions the storage rot on dahlia was not observed. The average daily temperature in the first decade was 10,7 °C, precipitations number 63,6 mm. Just then the first plants affected by the storage rot were detected (2,5 %). By the end of the vegetation period their amount was 5,0 % under the disease development 1,9 %.

The weather conditions of the dahlia plants vegetation in the June of 2017 were characterized by the average daily air temperature 18,5-21,6 °C, the precipitations sum being 16,4 mm (fig. 5), in July 19,9; 23,0; 22,3 °C and 42 mm respectively. The average daily air tem-



**Fig. 3. Dynamics of the dahlia white mold development (2015)**

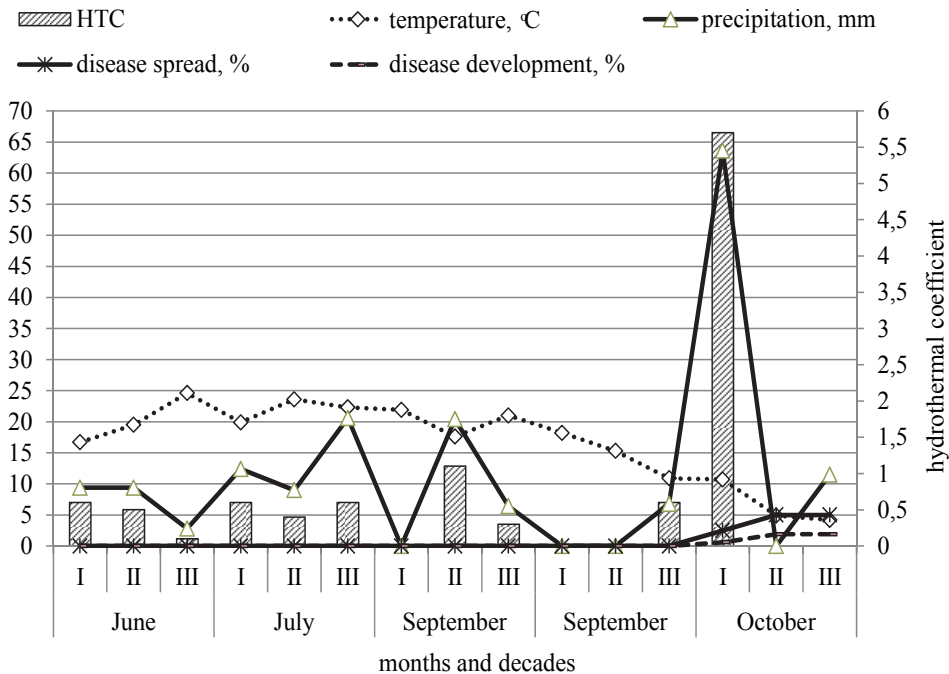
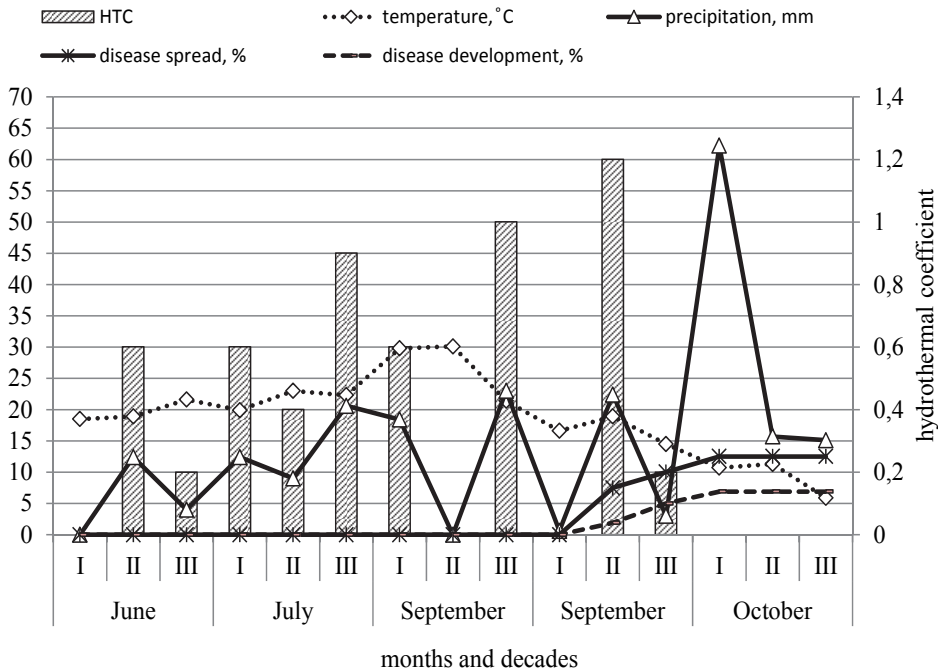


Fig. 4. Dynamics of the dahlia white mold development (2016)

perature at the beginning and in the middle of August was high: in the first decade 29,8 °C, in the second one 30,1 °C. In the third decade this index was at a level of 21,4 °C. The precipitations amount in August was 41,4 mm. The phytopathological analysis of the dahlia plants in the summer months did not detect the affection by the storage rot causative agent. The first decade of September distinguished itself for the average daily air temperature decrease to 16,6 °C and its increase to 18,9 °C in the second decade. From now on at the end of September this indicator was 14,5 °C. The greatest precipitation number in this month was noted in the second decade – 22,4 mm and in general their monthly sum achieved 26 mm. The dahlia plants monitoring in September showed their affection by the storage rot in the second decade, the disease spread being 7,5 %, its development 1,9 %. Later on the disease spread. In October the dahlia plants vegetation continued. The average daily air tempera-

ture (the first decade 10,7 °C, the second one 11,3 °C) contributed to this. At the end of the month in lowered to 5,9 °C. The precipitations amount in October was 93 mm (the first decade 62,2 mm). The maximum disease spread (12 %) and plants affection intensity (6,9 %) were noted.

The integral indicator – hydrothermal coefficient – was analyzed for the determination of the simultaneous effect of the temperature and precipitations on the terms of the dahlia white mold appearance. For instance, in 2015 the dahlia appeared, beginning since the first decade of September, under HTC 1,0. In 2016 the disease was observed on the plants in the first decade of October when HTC was 5,7. In 2017 in the second decade of September (HTC 1,2) respectively. In all the cases the storage rot appeared in the autumn vegetation period when the plants flowering in mass. The disease acquired maximum spread and develop-


**Fig. 5. Dynamics of the dahlia white mold development (2017)**

ment in 2017. In our opinion, it was conditioned by precipitations beginning from the second decade of September to the end of October and by the low temperatures absence in this period. It should be noted that even under the inconsiderable disease development degree the pathogen colonizing stems caused their doing off. The bulbs were infected in case of the affection of plants down parts by *S. sclerotiorum*.

### Conclusions and promises

1. The white mold form was detected as result of the dahlia plants monitoring. The strong plants affection brought about the tissues maceration that caused cracking of stems and floriferous shoots. The disease displays in the stem down part brought about the plants withering. As a result, buds and flowers dried.

2. In the research years (2015-2017) the storage rot appeared on dahlia in the autumn plants vegetation period during their mass flowering. The disease spread and develop-

ment were influenced by the weather conditions. In particular, in 2015 the dahlia *Sclerotinia* symptoms were displayed beginning from the first decade of September under HTC 1,0, in 2016 in the first decade of October and 5,7 respectively, in 2017 in the second decade of September and 1,2 respectively. Just in 2017 the disease acquired maximum spread and development. That, in our opinion, was conditioned by the precipitations beginning from the second decade of September to the end of October and low temperatures absence in this period.

3. If there is information about the terms of the storage rot appearance on dahlia it should plan a number of measures concerning its control. Generally, in the future the results of the analysis of the different weather factors effect on the dahlia storage rot development is expedient to apply for composing models of the disease development prediction on this crop.

**References**

1. Böttcher, I., Wetzel, T., Dreve, F.V., Kegler, X., Naumann, K., Freier, B., Frauenstein, K., Fuchs, E. (1987). Metody opredeleniya bolezney i vreditel'nykh sel'skokhozyaystvennykh rasteniy [Methods for determining diseases and pests of agricultural plants] Trans. with him. K.V. Popkova, V.A. Shmygli, Moscow, Agropromizdat, 224. (in Russian).
2. Almeyda, C. V., Raikhy, G., Pappu, H. R. (2015). Characterization and comparative analysis of promoters from three plant pararetroviruses associated with Dahlia (*Dahlia variabilis*). *Virus genes*. 51 (1). 96-104. doi: 10.1007/s11262-015-1196-7
3. Dai, Y.-F., Xiang, L.-G., Wang, H.-C., Chen, X.-J., Chen, X., Yang, X.-H. (2018). Powdery Mildew of *Dahlia pinnata* Caused by *Golovinomyces cichoracearum* in Guizhou Province of China. *Plant Disease*. 102 (12). 2654. <https://doi.org/10.1094/PDIS-04-18-0649-PDN>
4. Horst R.K. (2008). *Westcott's Plant Disease Handbook*. Springer-Verlag, Berlin Heidelberg, New York. 1343.
5. Jyoti Verma, Balaji S. Kulkarni (2017). Evaluation of Dahlia Genotypes for Growth and Yield Characters under Dry Zone of Karnataka. *Int. J. Curr. Microbiol. App. Sci.* 6 (11). 402-409. doi: <https://doi.org/10.20546/ijcmas.2017.611.046>
6. Kerruish, R. M. (1997). *Plant protection 3. Selected Ornamentals, Fruit and Vegetables*. RootRot Press. 700.
7. Kishor Sharma, Shalini Verma, Gautam, H.R., Anil Handa. (2017). First Report of Powdery Mildew Caused by *Golovinomyces cichoracearum* Dahlia (*Dahlia variabilis*) from Himachal Pradesh (India). *Int. J. Curr. Microbiol. App. Sci.* 6 (6). 1595-1598. doi: <https://doi.org/10.20546/ijcmas.2017.606.187>
8. Kyryk, M. M., Pиковskiy, M.Y., Azaiki, S. (2012). Diagnostic signs of diseases of vegetable crops and potato. Kyiv. Phoenix. 175.
9. Park, J. H., Choi, I. Y., Park, M. J., Han, K. S., Shin, H. D. (2016). First Report of Choanephora Flower Blight on *Dahlia pinnata* Caused by *Choanephora cucurbitarum* in Korea. *Plant Disease*. 100 (2). 534. <https://doi.org/10.1094/PDIS-08-15-0936-PDN>
10. Sahar, E., Keri, L. D., Dayle, E. S., Hanu, R. P. (2009). Incidence of multiple and Distinct Species of *Caulimoviruses* in *Dahlia* (*Dahlia variabilis*). *Hortscience*, 44 (5). 1498-1500. <https://doi.org/10.21273/HORTSCI.44.5.1498>
11. Willbur, J.F., Fall, M.L., Bloomingdale, C., Byrne, A.M., Chapman, S.A., Isard, S.A., Magarey, R.D., McCaghey, M.M., Mueller, B.D., Russo, J.M., Schlegel, J., Chilvers, M.I., Mueller, D.S., Kabbage, M., Smith, D.L. (2018). Weather-based models for assessing the risk of *Sclerotinia sclerotiorum* apothecial presence in soybean (*Glycine max*) fields. *Plant disease*, 102 (1). <https://doi.org/10.1094/PDIS-04-17-0504-RE>

**АНОТАЦІЯ**

М. Й. Піковський, О. В. Колесніченко, В. І. Мельник, О.О. Середюк. Паразитизация мікроміцета *sclerotinia sclerotiorum* (lib.) De bary на рослинах жоржини (*dahlia sativ*) За різних метеорологічних умов. Біоресурси і природокористування. 2019. 11, №3-4. С. 16-24. <https://doi.org/10.31548/bio2019.03.002>

**Анотація.** Біла гниль жоржини є небезпечною хворобою, яка в Україні залишається мало дослідженою. Для вивчення симптоматики хвороби та впливу метеорологічних умов на її розвиток нами проведено дослідження протягом 2015 – 2017 рр. на території м. Києва. Під час вивчення симптоматики захворювання застосовували візуальний огляд і біологічний метод діагностики. Розвиток хвороби оцінювали за шестибальною шкалою. У результаті фітопатологічного моніторингу виявлено стеблову форму білої гнилі. Сильне ураження рослин призводило до мацерації тканин і надламування стебел і квітконосів.

Розвиток хвороби у прикореневій частині стебла призводив до в'янення рослин. За роки досліджень біла гниль на жоржині проявлялася в осінній період вегетації рослин під час масового цвітіння. На її поширення та розвиток значно впливали метеорологічні умови. Зокрема, у 2015 році склеротиніоз жоржини проявлявся починаючи з першої декади вересня за гідротермічного коефіцієнта (ГТК) 1,0. У 2016 році хвороба з'явилася на рослинах у першій декаді жовтня, коли ГТК становив 5,7. Перші рослини, уражені білою гниллю у 2017 р. нами відмічені у другій декаді вересня за ГТК 1,2. Саме у цьому році хвороба



набула максимального поширення та розвитку, що зумовлено наявністю атмосферних опадів починаючи з другої декади вересня та до кінця жовтня, а також відсутністю низьких температур за цей період. Інформація щодо строків з'явлення білої гнилі на георгині заслуговує на увагу під час планування комплексу захисних заходів.

У подальшому глибокий аналіз впливу різних метеорологічних факторів на розвиток білої гнилі георгини доцільно застосовувати при складанні моделей прогнозу розвитку хвороби на цій культурі.

**Ключові слова:** біла гниль, георгина, симптоми, метеорологічні умови, розвиток хвороби

## АННОТАЦІЯ

**М. Й. Піковський, Е. В. Колесніченко, В. І. Мельник, А. А. Середюк.** Паразитирование микромицета *sclerotinia sclerotiorum* (lib.) De bary на растениях георгинны (*dahlia saui*) При различных метеорологических условиях. Биоресурсы и природопользование. 2019. **11**, №3–4. С.16–24. <https://doi.org/10.31548/bio2019.03.002>

**Аннотация.** Белая гниль георгинны является опасной болезнью, которая в Украине мало изучена. Для уточнения симптоматики болезни и влияния метеорологических условий на ее развитие нами проведены исследования в течение 2015 – 2017 гг. на территории г. Киева. При изучении диагностических признаков заболевания применяли визуальный осмотр и биологический метод диагностики. Развитие болезни оценивали по шестибальной шкале. В результате фитопатологического мониторинга выявлено стеблевую форму белой гнили. Сильное поражение растений приводило к мацерации тканей и надламыванию стеблей и цветоносов. Развитие болезни в прикорневой части стебля вызывало увяданий растений. За годы исследований белая гниль на георгине проявлялась в осенний период вегетации растений во время массового цветения. На ее распространение и развитие значительно влияли метеорологические условия. В частности, в 2015 году склеротиниоз георгинны проявлялся, начиная с первой дека-

ды сентября при гидротермическом коэффициенте (ГТК) 1,0. В 2016 болезнь появлялась на растениях в первой декаде октября, когда ГТК составлял 5,7. Первые растения, пораженные белой гнилью в 2017 г. нами отмечены во второй декаде сентября при ГТК 1,2. Именно в этом году болезнь приобретала максимального распространения и развития, что обусловлено наличием атмосферных осадков начиная со второй декады сентября и до конца октября, а также отсутствием низких температур за этот период. Информация о сроках появления белой гнили на георгине заслуживает внимания при планировании комплекса защитных мероприятий. В дальнейшем глубокий анализ влияния различных метеорологических факторов на развитие белой гнили георгинны целесообразно применять при составлении моделей прогноза развития болезни на этой культуре.

**Ключевые слова:** белая гниль, георгинны, симптомы, метеорологические условия, развитие болезни

Отримано 23.05.2019 р.