

**BEAUTIFUL-FLOWERING REPRESENTATIVES OF THE
ROSACEA FAMILY FEATURES OF USE IN LANDSCAPING OF
HOLOSIYIVSKY DISTRICT OF KYIV**

N. Tyshchenko, Master's Degree

M. Kukharska , the Candidate of Agricultural Sciences

The full-scale observation of Rosacea family (Rosaceae Juss.), growing in Holosiyivsky district of Kyiv. The flowering features of plants, their decorative in different seasons were analysed. The features of trees and shrubs use in city landscaping and the prospects for their wider implementation of landscaping were investigated.

Rosacea, flowering, gardening, blossom, green plantations.

Use of flowering plants is an important element in landscaping because they attract the most attention from the audience. They cause people have different positive emotions: a sense of joy, good mood, joy, concentration, causing problems to forget. Flowering representatives of the rosacea family (*Rosaceae* Juss.) occupies a prominent place in landscaping of Kyiv, including Holosiyivsky district, where observations were made. Most often, they are found in plantations areas that play an important role in the rest of the urban population.

Therefore, the study of these species, their decoration and participation in urban gardening is an extremely important issue.

Study representatives were involved in gardening *Rosaceae* different researchers. Melnyk Y. in his book [8] studied the characteristics cultivars representatives Rosacea use in landscaping. Some scientists studied members of certain families. In particular, Dubchak M. Yu studied decorative *Ekzohorda* species in the city of Kyiv. [6] Such scientists as Blyusyuk N.L. and Caroling L.B. were

involved in the study of species diversity and tin kind *Spireae* in the botanical garden of the National Forestry University [2].

Objective was to determine the genera and species of flowering representatives of the family *Rosaceae* Juss. in landscaping Holosiyivsky district, the study of their biological and ecological characteristics , analysis of flowering and ornamental during the year. Also, study the characteristics and prospects of the use of a wider implementation of urban greening Holosiyivsky district of Kyiv.

Materials and Methods Study: objects of study were representatives of the Rosacea family in Kiev. Observations were carried out in parks, streets area during the growing season in 2012-2013. Analysis of articles, which describes the use of Rosacea representatives in gardening, their bio-ecological characteristics, in which the level of individual species of this family done full scale survey across and photo observations of trees and bushes in different seasons was made. The overall decorative woody plants identified a 5-point scale developed by Kalinichenko O.A. [5]. A decorative of plants in the flowering stage 7-point scale by Mysnyk G.E. [9].

Results. Rosacea (*Rosaceae* Juss.) - the largest family that has a large number of flowering plants, which are extremely popular in gardening and landscaping.

In gardening of Holosiyivsky district of Kyiv for observation conducted by representatives of the family Rosacea occupy an important place, though their number is small compared to other species. On the streets, parks and gardens are most often found such representatives: *Spiraea media* Fr. Schmidt., *Spiraea vanhouttei* Zab., *Sorbus aucuparia* L., *Crataegus monogyna* Jac., *Chaenomeles japonica* Linl., *Cerasus vulgaris* Mill., *Padus racemosa* Gilib. They were found in-group plantings, hedges, as single plants.

According to observations conducted in the Holosiyivsky district plants are used to create hedges of the genus *Spiraea* L., namely the average used *Spiraea media* Fr. Schmidt, and *Spiraea silicifolia* L. less used. To create a single plants - *Sorbus aucuparia* L., *Malus silvestris* Mill., *Cerasus vulgaris* Mill., *Padus serotina* Agardh.. They are most represented in the parks and squares. Group of landing mainly presented with *Spiraea*, *Rosa*.

Caring for plants is under process maps that workers spend utilities for maintenance of greenery Kiev. During visual inspection revealed that some specimens of trees requiring sanitary pruning and fertilizing. These plants, which grow on both sides of Avenue Holosiyivsky, namely *Cerasus vulgaris* Mill., *Padus racemosa* Gilib. planting with representatives Rosaceae all ages. Accordingly, the decorative qualities are expressed differently. In older trees there pests on the leaves, stems improperly formatted (fruit trees *Padus* and *Malus*, located on Avenue of Nauky).

Analyzing flowering of Rosacea representatives in Holosiyivsky district, we can say that the decorative effect of plants during flowering different. It is observed depending on the month of flowering. Each plant has its own characteristics and flowering period.

As shown in the diagram, the most massive flowering trees and shrubs Rosaceae falls in May (according to observations from 2013).

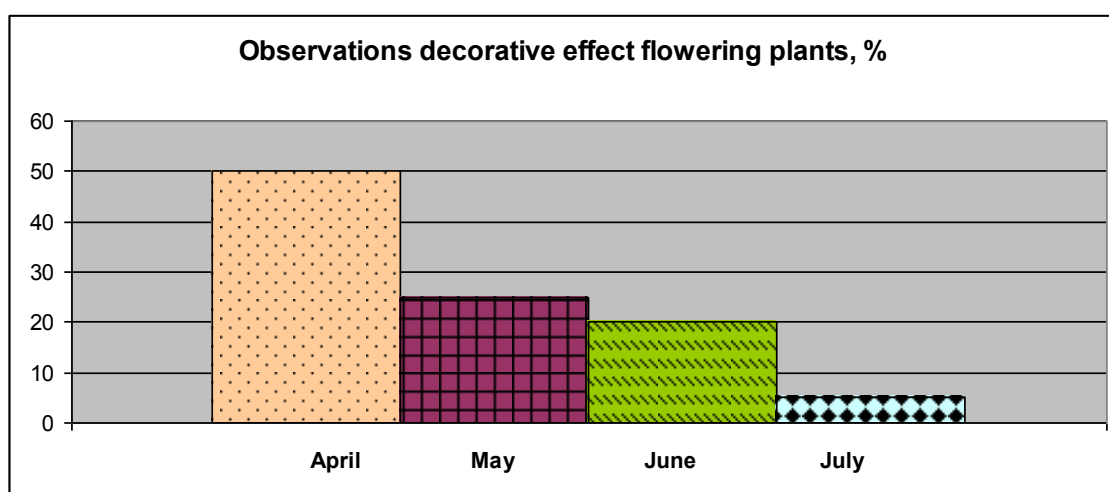


Figure 1. Distribution of timing of flowering of Rosacea family by month

In late April and early May *Amygdalus triloba* Rick., *Malus silvestris* Mill, *Malus niedzwetzkiana* Dieck., pears, *Armeniaca vulgaris* Lam, *Cerasus serrulata* L. are blooming, In mid-May we can see the blossoms of *Spiraea media* Fr. Schmidt, *Spiraea vanhouttei* Zab., *Crataegus*, *Exohorda giraldii* Hesse. At the beginning of June – *Rosa rugosa* Thunb., *Potentilla fruticosa* L., in the middle of the month and in early July – *Spiraea japonica* L. Different species of deciduous trees flowers may

appear to foliage , along with his appearance or after *leaves* . By leafing blooming, *Armeniaca vulgaris* Lam , *Chaenomeles japonica* Linl., *Amygdalus triloba* Rick., three-bladed almonds . Along with foliage - *Cerasus vulgaris* Mill., *Malus silvestris* Mill.

It should be noted that each test object plants with different flowering period. In the park "Disc" *Spiraea vanhouttei* Zab. blossoms longer than in the nearby station " Hippodrome ", but metro station it has abundant flowering. This is because the park planting of *Spiraea* are in shady places. *Exohorda giraldii* Hesse. has more attractive during flowering in an open meadow in the park Holosiyivo than at the exhibition center , where it grows in dense planting with other species of trees. The size of the flowers is dominated by small (*Cerasus vulgaris* Mill., *Amygdalus triloba* Rick., *Crataegus monogyna* Jac.,) and small (*Spiraea media* Fr. Schmidt, *Spiraea vanhouttei* Zab., *Sorbus aucuparia* L, *Sorbus*) [5].

After analyzing the color of flowers, representatives of the family Rosacea, which use for landscaping of Holosiyivsky district, are the most common colors. Flowers bloom in different colors on certain types of trees and shrubs. It is white, yellow, pink, carmine hues. Each of them plays an important role in human perception . The most widespread color - is white. Its flowers have *Spiraea*, *Exohorda*, *Malus*, *Pyrus Armeniaca*. Looks spectacular group of planting *Spiraea vanhouttei* Zab. on Avenue of Science and Holosiivskyj. Pink flowers trees and shrubs also widespread. The park 'Teremky' is the avenue of *Cerasus serrulata* L. also ordinary planting this plant is in the park of the National Taras Shevchenko University (Glushkov Street).

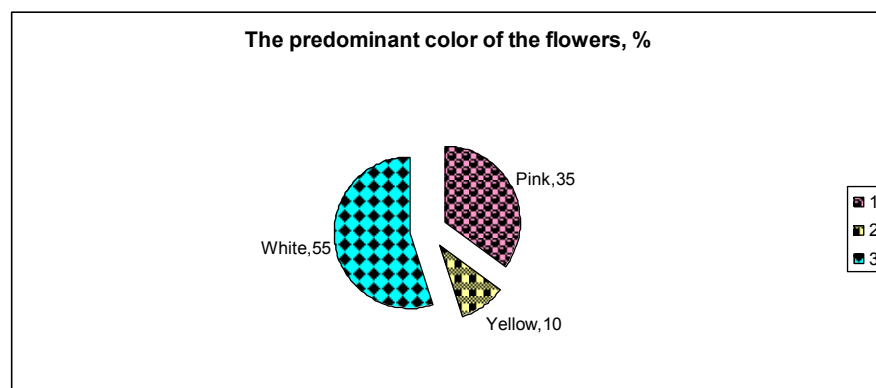


Figure 2. Distribution of beautiful-flowering representatives of Rosacea family by the perianth color

The least common - orange and yellow blossoms under these shades such plants : *Chaenomeles japonica* Linl., *Kerria japonica* L.

Most ornamental flowering period of the following types: *Amygdalus triloba* Rick., *Crataegus monogyna* Jac., *Spiraea vanhouttei* Zab., . The highest overall assessment decoration with *Spiraea vanhouttei* Zab., *Cerasus serrulata* L., *Amygdalus triloba* Rick., almond three-bladed [5].

The analysis of natural habitat representatives *Rosaceae* was made. Natural plants distributed around the world, from Siberia, the Far East. Much of the increase in Central Asia (*Spiraea media* Fr. Schmidt, *Rosa rugosa* Thunb., *Cydonia oblonga* Mill., *Padus racemosa* Gilib.) and in China and Japan (*Cerasus serrulata* L., *Armeniaca vulgaris* Lam., *Spiraea japonica* L.). In Ukraine natural habitat is *Cerasus vulgaris* Mill., almost all plants introduced in Ukraine, they are widely cultivated in different parts of the state.

With life forms Representatives Rosacea, most (55 % of plants) are presented in landscaping bushes [5].

Conclusions

The results of the study the following conclusions:

1. Representatives of the *Rosaceae* are expressed as decorative. This is typically profuse flowering during the spring and early summer.
2. The growing season begins almost at the same time. It lets you create floral arrangements, decorative effect which can be clearly plan.
3. Trees and shrubs *Rosacea* not require special care. Preferably, all winter-hardy plants are highly drought assessment.
4. Using family members can create groups, hedges, paths, use them in solitaire landings. Groups created by systematic principles are artistic and decorative features, for example, creating a group with different colors of plants. You can create as monochromatic composition and contrast, as well as regular landscape.

Therefore, we should use them more extensively in landscaping Holosiyivsky district of Kyiv and beyond. It is not only decorative plants during flowering (although this is their main advantage), but also at other times of the year.

List of references

1. Акимов П.А. Декоративные деревья и кустарники. - М.: Издательство сельскохозяйственной литературы, 1963. – 264 с.
2. Блюсюк Н.Л. Видове і формове різноманіття роду *Spireae* L. Е у колекції дендропарку ботанічного саду Національного лісотехнічного університету України [Електронний ресурс] / Блюсюк Н.Л., Коляда Л.Б. // Науковий вісник НЛТУ України. – 2009. – Вип. 19.6. Режим доступу: http://archive.nbu.gov.ua/portal/chem_biol/nvnltu/19_6/22_Bliusuk_19_6.pdf
3. Дендрофлора України. Дикорослі та культивовані дерева і кущі. Покритонасінні. Частина II. Довідник / За ред. М.А. Кохна та Н.М. Трофименко. – К.: Фітосоціоцентр, 2005. – 716 с., іл.
4. Деревья и кустарники / Отв. ред. Л.И. Рубцов. – К.: Наук. думка, 1974. – 592 с.
5. Калініченко О.А. Декоративна дендрологія . Навч. посіб. – К.: Вища шк., 2003. – 199 с.:іл.
6. Дубчак М.Ю. Декоративність видів роду *Exochorda* Lindl. в умовах міста Києва [Електронний ресурс] / М.Ю. Дубчак // Науковий вісник Національного університету біоресурсів і природокористування України. – 2012. – Вип. 2(31). Режим доступу: http://www.nbu.gov.ua/e-journals/Nd/2012_2/12dmy.pdf
7. Мамчур Т.В. Використання декоративних видів роду *Ribes* L. в озелененні [Електронний ресурс] /Т.В. Мамчур// Науковий вісник НЛТУ України. – 2013. – Вип. 23.5 Режим доступу: http://archive.nbu.gov.ua/portal/chem_biol/nvnltu/23_5/233_Mam.pdf
8. Мельник Ю.А. Декоративні форми родини розових в озелененні / Ю.А. Мельник // Науковий вісник НАУ. – 2003. вип. 13. 1. – 23-27 с.
9. Мисник Г.Е. Сроки и характер цветения деревьев и кустарников / Г.Е. Мисник. – К.: «Наукова думка», 1976. – 392 с.: ил.